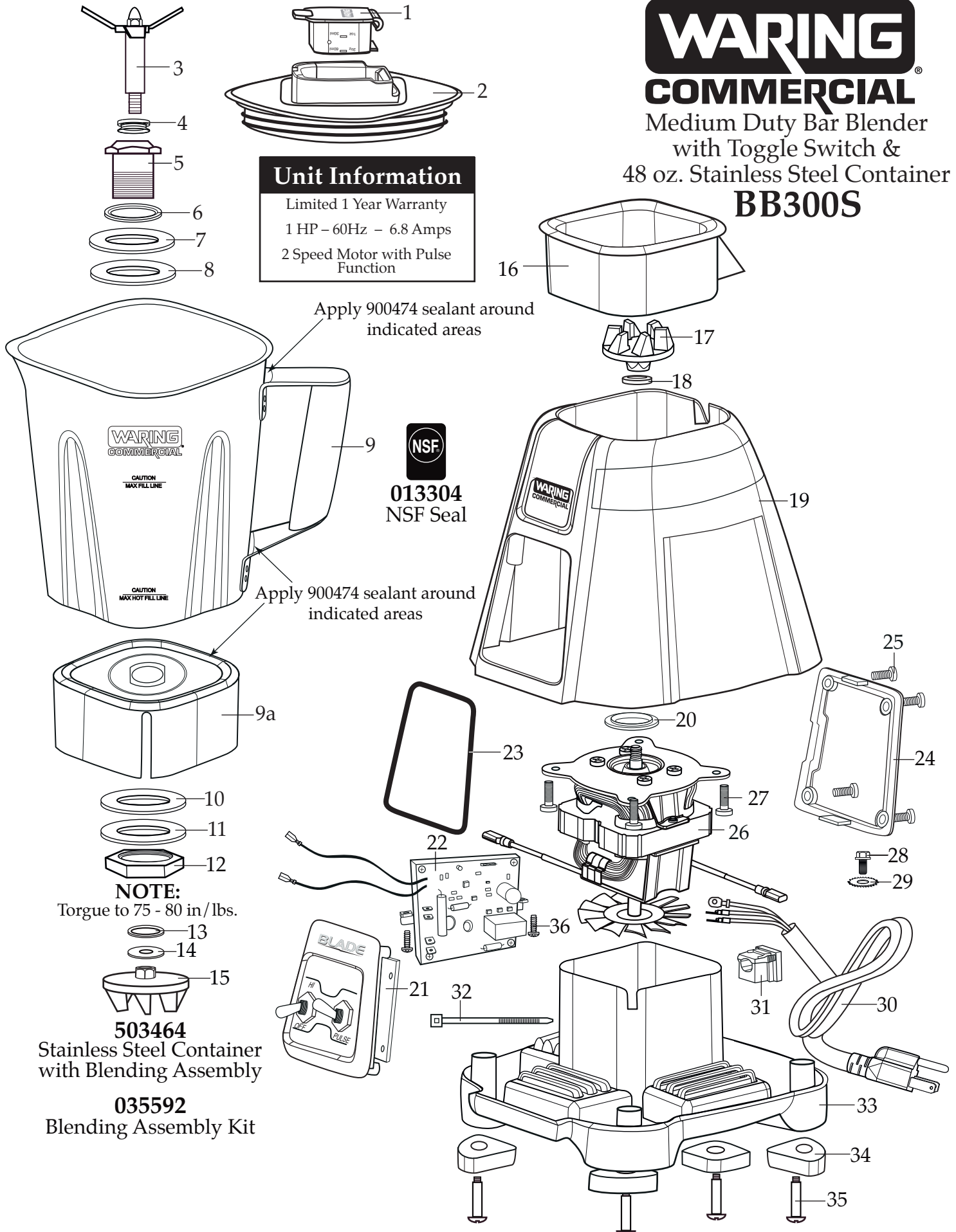


# WARING COMMERCIAL

Medium Duty Bar Blender  
with Toggle Switch &  
48 oz. Stainless Steel Container  
**BB300S**

## Unit Information

Limited 1 Year Warranty  
1 HP - 60Hz - 6.8 Amps  
2 Speed Motor with Pulse  
Function



**NOTE:**  
Torque to 75 - 80 in/lbs.

**503464**  
Stainless Steel Container  
with Blending Assembly

**035592**  
Blending Assembly Kit

Illustration #	Part #	Description
1	035153 026282-E	Jar Cover Lid ( <i>on units after 3/9/2016</i> ) Eastman Cover Lid
2	033625-V	Vinyl Jar Cover
3	503444	Blade Assembly
4	027716	V Seal
5	503458	Bearing Holder/Seal Assembly
6	009724	Nylon Flat Washer
7	003537	Stainless Steel Washer
8	003509	Neoprene Washer (rubber)
9	034775	48 oz. Stainless Steel Container
9a	034776	Jar Bottom
10	003509	Neoprene Washer (rubber)
11	003537	Stainless Steel Washer
12	034156	Bearing Holder Nut
13	003526	Phenolic Washer
14	035048	Flat Stainless Steel Washer
15	032453	Coupling
16	033623	Jar Pad
17	032453	Coupling
18	026413	Stainless Steel Cap Washer
19	033616	Top Housing
20	026269	Upper Motor Mount
21	033545	Control Panel
22	035176	120v Soft Start PCB
23	033737	O Ring
24		<i>Comes with the 033545 Control Panel</i>
25	026267	Screw (4 required)
26	033618	120 volt Chiaphua Motor
27	032611	Screw (4 required)
28	027278	Ground Screw

Illustration #	Part #	Description
29	002943	Washer
30	503471	Cordset Assembly
31	033619	Strain Relief
32	013731	Wire Tie (2 required)
33	035282	Bottom Housing
34	035287	Foot (4 required)
35	035260	Screw (4 required)
36	033526	Screw (2 required)

