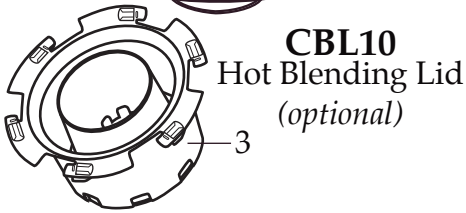
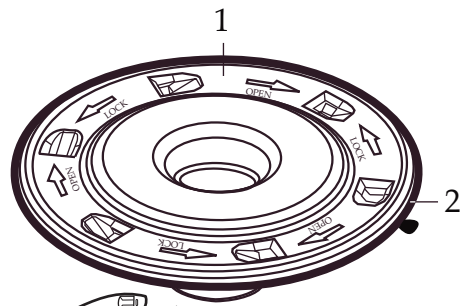


WARING
COMMERCIAL

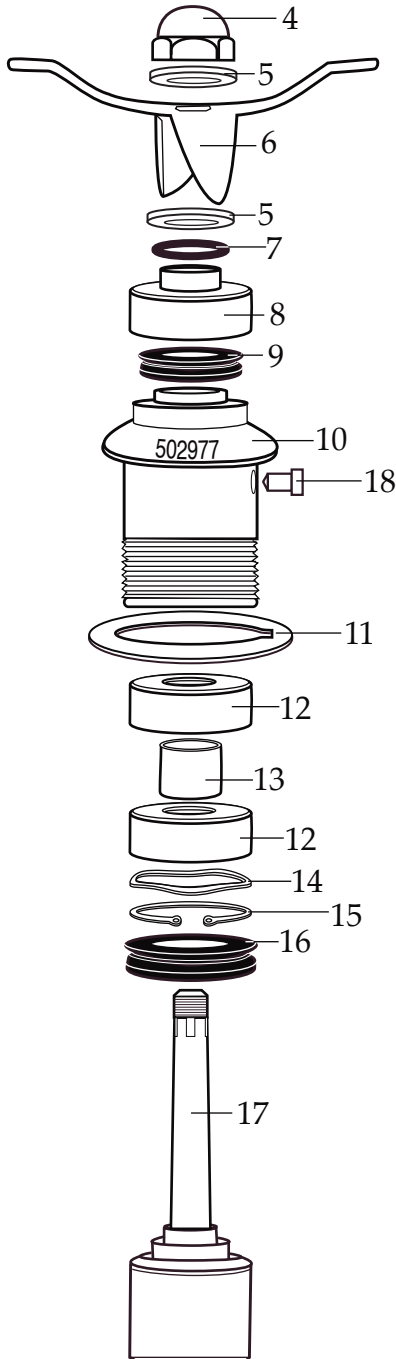
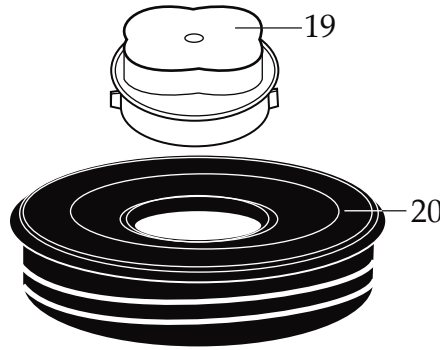
CB15V

One Gallon Variable Speed Blender



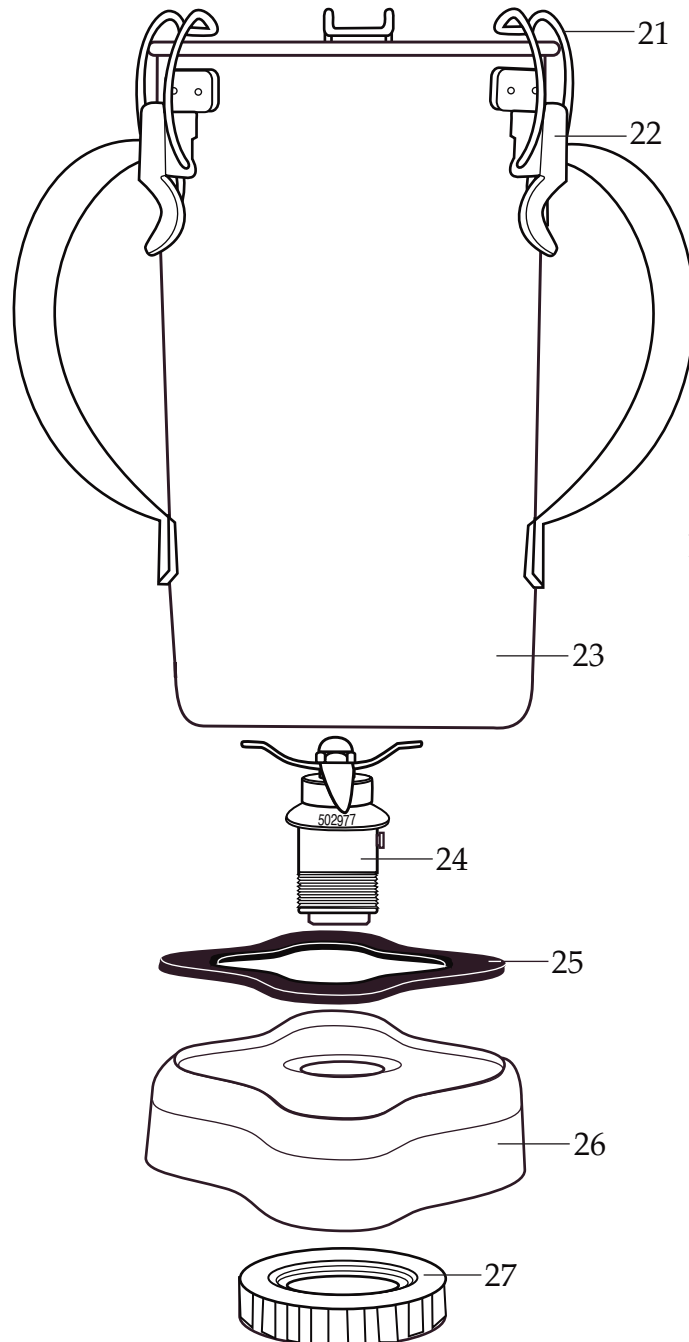
CBL10

Hot Blending Lid
(optional)



502977

Blending Assembly



013304
NSF Seal

502235 - Container with Blending Assy.

704587 - Container Complete with Lid

704350 - Container Complete with Stainless Steel Lid

WARING COMMERCIAL[®] CB15V

Unit Information

3 Limited Motor Warranty
15.0 Amps.
1,500-18,500 RPM's (no load)

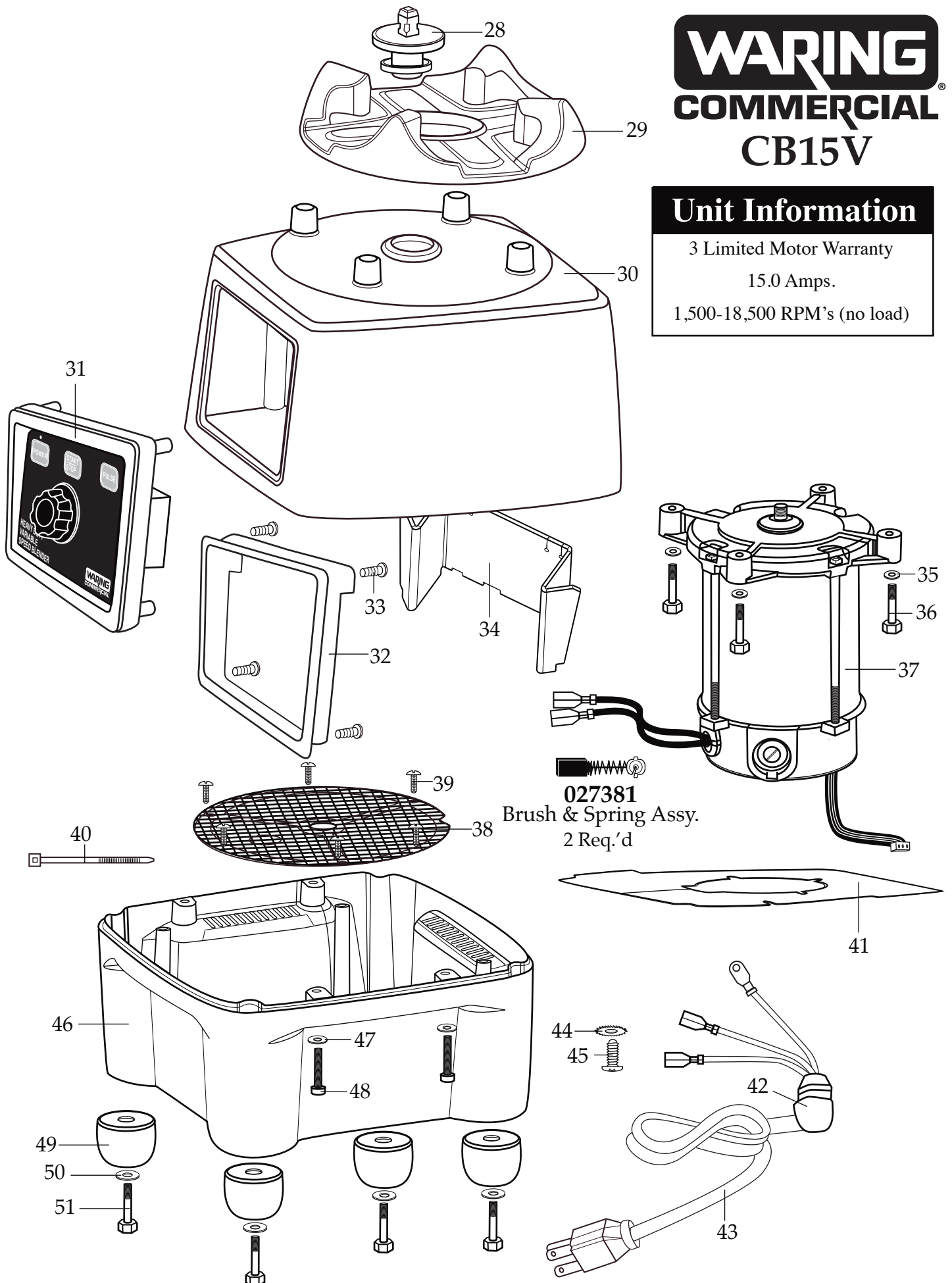
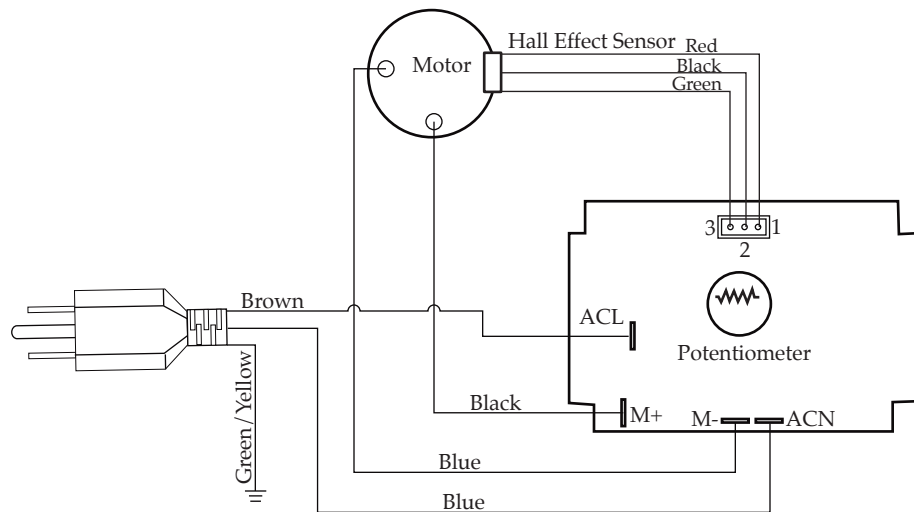


Illustration #	Part #	Description
33	026497	Screw 4 Req.'d
34	030453	Control Panel Baffle
35	002984	Washer 4 Req.'d
36	016691	Screw 4 Req.'d
37	503323	Motor with Sensor
38	018791	Screen
39	026500	Screw 6 Req.'d
40	013731	Cable Tie 5 Req.'d
41	026318	Baffle
42	018811	Strain Relief
43	503329	Cord Set
44	002943	Washer /ground
45	027278	Screw /ground
46	026317	Bottom Housing
47	002984	Washer 4 Req.'d
48	026412	Screw 4 Req.'d
49	026296	Foot 4 Req.'d
50	018314	Washer 4 Req.'d
51	026493	Screw 4 Req.'d



Wiring Diagram

Illustration #	Part #	Description
1	024000	Outer Lid /polycarbonate for hot blending
2	026496	Gasket /plastic outer lid
3	023998	Baffle Cup for hot blending lid
4	002972	Cap Nut
5	027581	Washer /flat
6	027683	Blade
7	018389	"O" Ring
8	027582	Bearing Cap
9	018390	"V" Ring /small
10	023934	Bearing Holder
11	004946	Washer
12	018386	Bearing
13	023926	Spacer
14	023907	Spring Washer
15	023927	Retaining Ring
16	023906	"V" Ring /large
17	023933	Drive Shaft
18	025817	Key
19	028530	Cover Insert
20	028226	Outer Lid
21	008791	Latch Wire 3 Req.'d
22	502773	Bracket Assy. /spot welded to container 3 Req.'d
23	023909	Double Handle Container
24	502977	Blending Assy. /complete
25	004949	Gasket /container base
26	025571	Container Support /container base
27	012008	Lock Nut
28	503328	Coupling
29	025871	Jar Pad
30	028025 026316	Top Housing (<i>current production</i>) Top Housing
31	030201	Control Panel Assy.
32	029888	Control Panel Rear